



University of  
**Salford**  
MANCHESTER

# NEW **ADELPHI**

---

## THEATRE

WHAT'S ON  
SPRING / SUMMER 2019





# W E L C O M E



**NEW ADELPHI THEATRE** is back for its spring season and runs from February to August 2019. You may see some new faces this year too, as we're joined by three graduate interns and four Dance students on placement.

There's too much to mention, but a quick glance at our programme includes *The Adhesion of Love* (28 February), a story about how a man from Bolton met Queer literary hero Walt Whitman, written by multi-award winning playwright Stephen M Hornby. And if you missed the premier of Mike Leigh's film *Peterloo* you can catch it here (4 March), followed by a Q&A with Director Mike Leigh.

If comedy is your thing, get to *Suspiciously Cheap Comedy Night* (18 March) for a full line up of comedy talent.

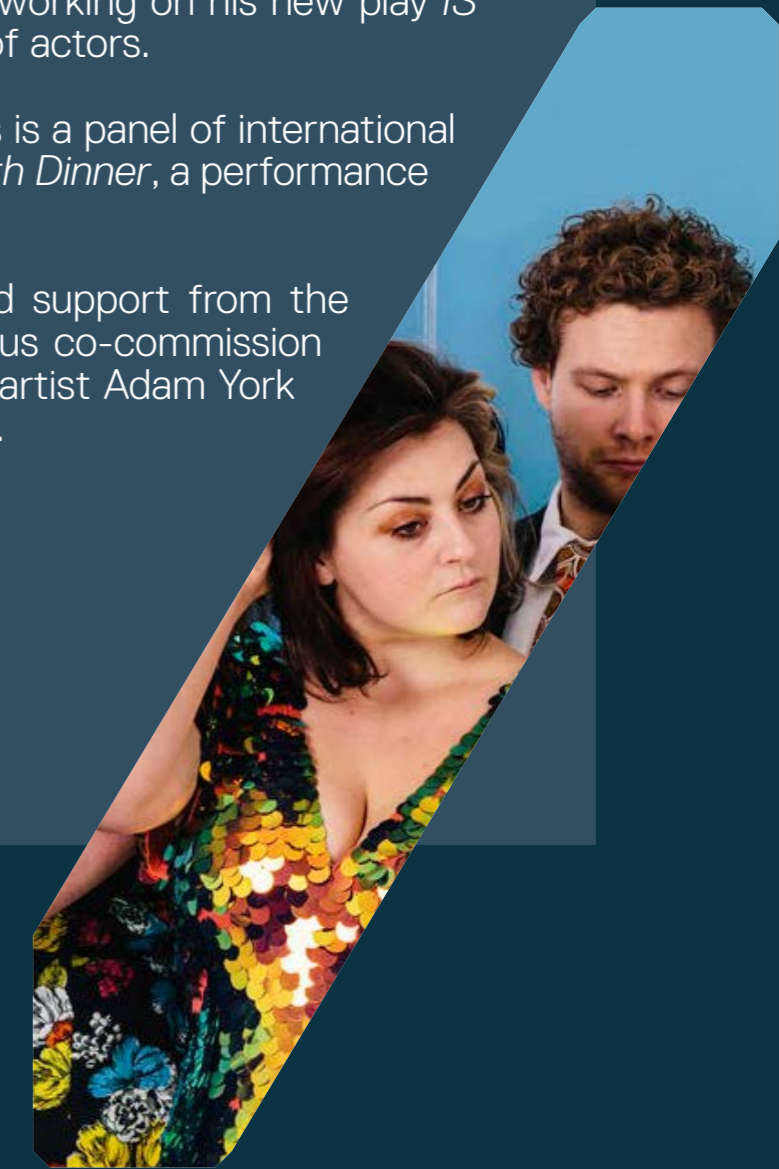
We're really excited to announce that award winning writer Jim Cartwright is in residence in March, working on his new play *IS THERE ANYBODY THERE?* (22 March) with Theatre Director Anthony Banks, and a fantastic line up of actors.

We've teamed up with SICK! Festival to host a symposium on Performance & Death (25 April). Joining us is a panel of international artists and academics to explore death, dying and grief. The event will end with Dr. Sheila McCormick's *Death Dinner*, a performance event that asks us to consider our relationship to death and grief together, around the dinner table.

These events (and more) have been possible through funding from the **Salford Advantage Fund** and support from the **School of Arts and Media**. We've also been awarded funding from the **ICZ HEIF grant** that will help us co-commission and programme a digital strand over the next 2 years, including a collaboration with Dr. Ali Matthews and artist Adam York Gregory, who'll be exploring intimate live performance using 360° digital environments and VR experiences.

We look forward to welcoming you.

Niki Woods: Artistic Director



## VENUE TEAM

Laurence Boot: Technical Manager  
Hannah Briggs: Box Office and Marketing  
Ashlee Cox: Front of House and Audience Development  
Mark Fox: Venue Development Manager  
Sam Ingleson: Associate Dean of Engagement, Enterprise, and Partnerships

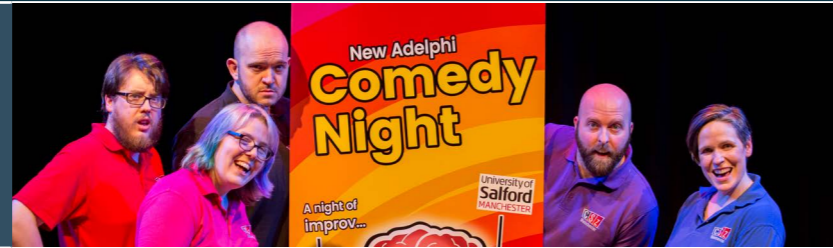
## PROGRAMMING TEAM

Kate Adams, Lisa Cullen, Tim France, Ali Matthews, Szilvia Naray-Davey, Malcolm Raeburn, Sarie Slee, Duncan Winfield.

FOR INFO REGARDING VENUE HIRE, PLEASE CONTACT: [AM-NEWADELPHIBOOKINGS@SALFORD.AC.UK](mailto:AM-NEWADELPHIBOOKINGS@SALFORD.AC.UK)

BOX OFFICE ENQUIRIES: 0161 295 2533 BETWEEN 10AM-4PM

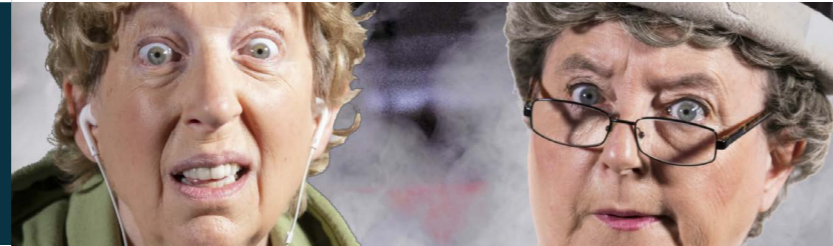
TUE 5 FEB / 7:30PM



**NEW ADELPHI COMEDY NIGHT**

£3

MON 25 FEB / 7:30PM



LIPSERVICE  
**STRANGERS ON A TRAIN SET - A PREVIEW**

FREE

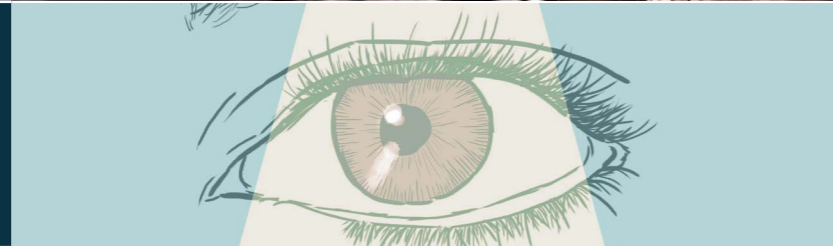
THU 28 FEB / 7:30PM



INKBREW PRODUCTIONS  
**THE ADHESION OF LOVE**

£10/£7

FRI 1 MAR / 1PM



**SHOWCASE - UNIVERSITY OF SALFORD** INVITE ONLY

MON 4 MAR / 6PM



**PETERLOO - SCREENING**

£5/£3

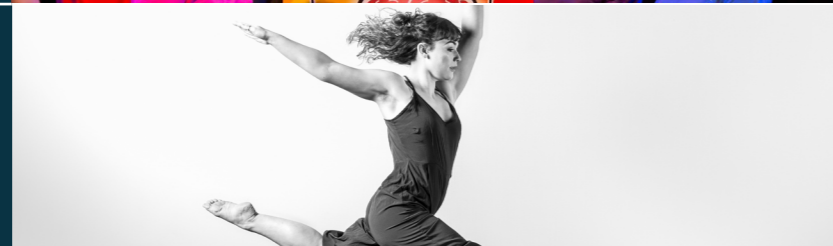
TUE 5 MAR / 7:30PM



**NEW ADELPHI COMEDY NIGHT**

£3

TUE 12 MAR / 7PM



SCHOOL OF  
ARTS  
& MEDIA  
**DANCE WITH US**

£6/£4

MON 18 MAR / 7:30PM



**SUSPICIOUSLY CHEAP COMEDY NIGHT**

£5/£3

TUE 19 MAR / 7PM



## CHORTLE STUDENT COMEDY AWARDS

£5/£3

FRI 22 MAR / 7:30PM



A NEW PLAY BY JIM CARTWRIGHT

## IS THERE ANYBODY THERE?

£10/£7

TUE 2 APR / 7:30PM



## NEW ADELPHI COMEDY NIGHT

£3

THUR 25 APR / 10AM



SICK! FESTIVAL

## PERFORMANCE & DEATH SYMPOSIUM

£25/£10

THURS 9 - SAT 11 MAY



SCHOOL OF  
ARTS  
& MEDIA

## DEBUT: A FESTIVAL OF THEATRE & COMEDY

SUGGESTED  
DONATION

TUES 14 - THURS 16 MAY

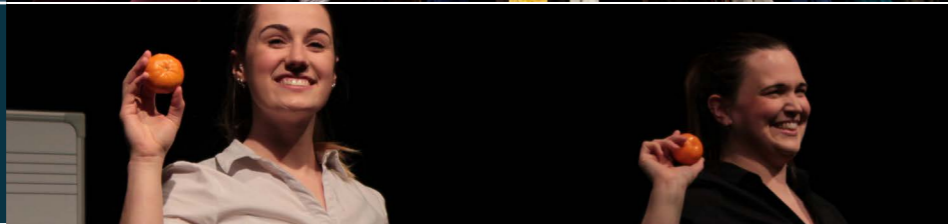


SCHOOL OF  
ARTS  
& MEDIA

## DANCE@SALFORD

£4/£2

WEDS 15 MAY



SCHOOL OF  
ARTS  
& MEDIA

## DYP MINI-FEST

PAY WHAT  
YOU CAN

WED 17 MAY / 7PM



SCHOOL OF  
ARTS  
& MEDIA

## MEDIA & PERFORMANCE FILM FESTIVAL

£3

THU 29 - SAT 31 AUG



SCHOOL OF  
ARTS  
& MEDIA

## ARRIVAL FESTIVAL

PAY WHAT  
YOU CAN



## NEW ADELPHI COMEDY NIGHT

New Adelphi Studio / 7:30pm

**The University of Salford and CSzUK have teamed up for a monthly show of fast and fierce fun!**

The first half is packed with quick-witted improvised shenanigans with off-the-cuff gags, games, sketches and songs featuring a student guest. The second half is an open mic for student and guest comedians to try out new material whether it's stand up, improv or sketch.

Tickets are £3, pay on the door.

**DATES: 5 FEB / 5 MAR / 2 APR**

[CLICK HERE FOR MORE INFO](#)



## STRANGERS ON A TRAINSET - PREVIEW

New Adelphi Studio / 25 February / 7:30pm

**Join us for a preview of the new show from LipService, 'Britain's favourite literary lunatics'!**

Challenging a youth to turn down his music, Irene Sparrow finds herself under suspicion of murder after their train emerges from a tunnel with the young man dead.

With clever use of projection and multiple train sets, LipService give you a whistle stop tour that will leave you breathless and racing for the refreshment coach. A show that appeals to crime aficionados and narrow gauge railway enthusiasts alike.

**Please note: this performance is for students and staff only.**

[CLICK HERE FOR TICKETS](#)



## THE ADHESION OF LOVE

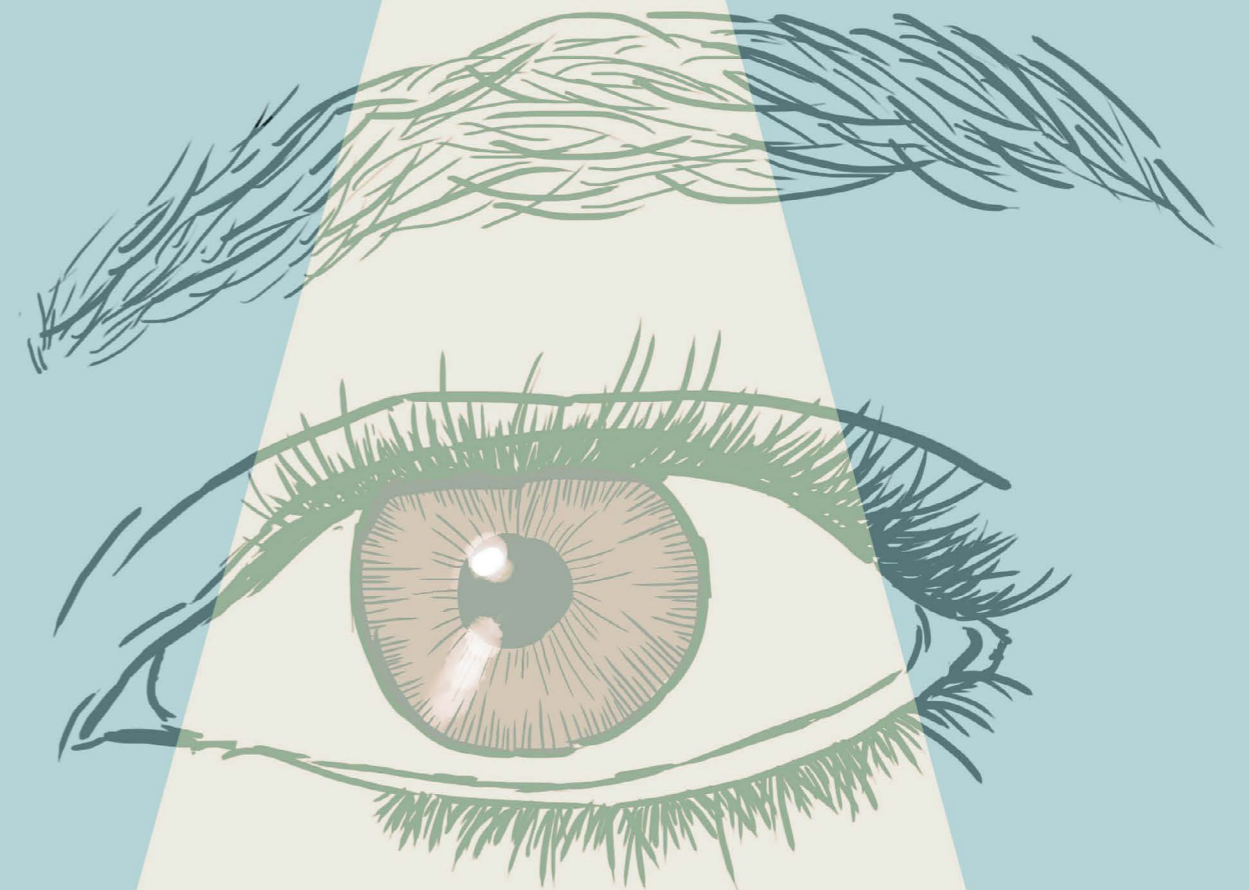
New Adelphi Studio / 28 February / 7:30pm

**What happens when you meet your hero and they know you better than you know yourself?**

This extraordinary true story of one working-class man's journey from Victorian Bolton across the Atlantic to meet visionary queer American poet, Walt Whitman, unearths new truths about previously unwritten love.

LGBT History Month playwright in residence Stephen M Hornby queers history again as he sheds new light on Whitman and his connection to a group of men in Lancashire in his bicentennial year.

[CLICK HERE TO BUY TICKETS](#)



## SHOWCASE

SCHOOL OF  
ARTS  
& MEDIA

New Adelphi Studio / 1 March / 1pm

**The University of Salford invites agents, producers and casting directors to spend an hour sampling the work of some of the best graduating performers of 2019.**

Previous graduates have gone on to work in everything from children's television (Ryan Russell, *CBeebies*) to thrillers (Warren Brown, *Luther*), from comedy (Jason Manford, Luisa Omielan) to continuing dramas (Dean Fagan, Chris Bisson, *Coronation Street*). Salford graduates can also be found working in every branch of theatre locally, regionally and in the capital, from 53Two to the National Theatre.

**This event is invite only.**



# PETERLOO - SCREENING

New Adelphi Theatre

4 March

6pm

**Join us for a special screening of *Peterloo* followed by a Q&A with the Oscar-nominated and BAFTA-winning director Mike Leigh.**

The film chronicles the Peterloo Massacre of 1819, which became one of the bloodiest events in British history. Frustrated by enduring poverty and lack of suffrage following the Napoleonic War, a 60,000-strong crowd, led by Henry “Orator” Hunt, gathers to peacefully demand political reform. When government troops storm the crowd, many civilians are killed and hundreds injured, provoking national outcry - and further government suppression.

The film, starring Maxine Peake and Rory Kinnear, chronicles the Peterloo Massacre of 1819 and is an epic portrayal of the events leading up to the massacre and how it came to play a significant role in parliamentary reform.

Following the critically-acclaimed *Mr Turner*, and with a cast of over 100, *Peterloo* has the largest budget of Leigh’s films to date, and is a passion project for the Salford-raised director.

*Peterloo* has been given a BBFC certificate of 12A.

[CLICK HERE TO BUY TICKETS](#)



## DANCE WITH US

SCHOOL OF  
ARTS  
& MEDIA

New Adelphi Theatre / 12 March / 7pm

**Join us for an evening of diversity and innovation!**

Our annual spring platform form will deliver new works from our Pittsburgh friends Bodiography, Lisa Simpson will show her current choreography, and there will be performances and workshops on offer for you between the 12th and 15th.

[CLICK HERE TO BUY TICKETS](#)



## SUSPICIOUSLY CHEAP COMEDY NIGHT

New Adelphi Theatre / 18 March / 7:30pm

**Suspiciously Cheap Comedy is a new material night hosted by multi award-winning Gein's Family Giftshop, Goose, and resident MC Kiri Pritchard-McLean.**

We think comedians should have great, switched-on audiences to try out new material in front of; and we also believe that everyone should be able to afford a great night of comedy. So, we collected an amazing audience of comedy fans and we made our night as cheap as we could: some (we) would say Suspiciously Cheap. And now here we are.

Previous acts include James Acaster, Nish Kumar, Rose Matafeo, Russell Howard, Greg Davies, Sara Pascoe, Tim Key, Lolly Adefope, Joel Dommett, Jamali Maddix and more!

[CLICK HERE TO BUY TICKETS](#)





## CHORTLE STUDENT COMEDY AWARDS

New Adelphi Studio / 19 March / 7pm

**Come and see the possible future stars of comedy at the North West heat of the 2019 Chortle Student Comedy Awards! Shortlisted comedians will be put forward for final Heats at the Pleasance, as part of the Edinburgh Festival Fringe.**

The competition has an enviable track record of finding successful stand-ups, with previous finalists including Joe Lycett, Simon Bird, Iain Stirling, Chris Ramsey, Tom Rosenthal, Lauren Pattison and Salford graduate Jamali Maddix, who now fronts the Channel 4/Vice programme *Hate They Neighbour*.

[CLICK HERE TO BUY TICKETS](#)

Photo credit: Martin Moran



## IS THERE ANYBODY THERE?

New Adelphi Theatre / 22 March / 7:30pm

***IS THERE ANYBODY THERE?* is a new play written by award winning Jim Cartwright and directed by Anthony Banks.**

Both are in residency in March working with well known actors (to be announced!). The play will be previewed at New Adelphi Theatre as a first sharing/script in hand performance.

Jim Cartwright's *IS THERE ANYBODY THERE?* Is a psychic thriller, an exploration of mortality and the meaning of life itself, and a look into the lives of a group of northern women struggling to get by on zero hours contracts. The protagonists are a group of cleaning ladies and other staff, who work the late night shift in a high rise sky scraper in the North of England.

[CLICK HERE TO BUY TICKETS](#)



# PERFORMANCE & DEATH SYMPOSIUM

New Adelphi Studio / 25 April / 10am

**Part of Sick! Festival, Death in Performance examines artistic practices that explore death, dying and grief.**

The symposium will reflect on the responsibility that artists may or may not bear to the human subjects of their performances, those who participate in its creation and the audiences who experience the finished works.

As the boundaries between performance practices and other art-forms break down, it is often the demands and sensitivities of subject matter that shape artistic practice and

artists' approaches to aesthetics, research, participation and presentation.

Alongside panel discussions, the symposium includes an opportunity to experience Sheila McCormick's *Death, Dinner and Performance* project, which places taboo subjects of death and dying in the conversational context of the dinner table.

[\*\*CLICK HERE TO BUY TICKETS\*\*](#)



## DEBUT: A FESTIVAL OF THEATRE & COMEDY

SCHOOL OF  
ARTS  
& MEDIA

New Adelphi Studio and Theatre / 9-11 May

**Final year Performance students prepare to launch themselves into the professional world; join us for their debut.**

This 3-day festival of collaborative projects from students on the BA Theatre & Performance Practice and BA Comedy Writing & Performance brings together a diverse range of work – including devised pieces, scripted plays, multimedia theatre, comedy performances, and more – in our New Adelphi Theatre and Studio spaces.

[CLICK HERE FOR MORE INFO](#)



## DANCE@SALFORD

SCHOOL OF  
ARTS  
& MEDIA

New Adelphi Theatre / 14-16 May

**Graduating BA and MA students present their final work!**

Join us for a variety of original dance performances spanning different styles and collaborations with other art forms.

Come along and watch the next generation of choreographers and performers.

[CLICK HERE TO BUY TICKETS](#)



## DYP MINI-FEST

SCHOOL OF  
ARTS  
& MEDIA

New Adelphi Studio / 15 May

### Performances like no other!

This one day festival showcases works in development from students on the MA in Contemporary Performance, combining a range of practices, from dance and theatre to one-to-one encounters, from durational performance to comedy.

This fresh, new work from emerging performance-makers is part of their ongoing inquiries in the field of contemporary performance.

[CLICK HERE FOR MORE INFO](#)



## MEDIA & PERFORMANCE FILM FESTIVAL

SCHOOL OF  
ARTS  
& MEDIA

New Adelphi Theatre / 17 May / 7pm

### The next generation of filmmakers!

Come and join us for a festival of short-form filmed dramas produced by and starring final year Media and Performance students from the University of Salford.

[CLICK HERE TO BUY TICKETS](#)



# ARRIVAL FESTIVAL

SCHOOL OF  
ARTS  
& MEDIA

New Adelphi Studio / 29-31 August

## Explore diverse and cutting-edge work at Arrival Festival!

This annual festival marks the culmination of students' practical explorations on the MA in Contemporary Performance Practice.

This celebration of diverse contemporary work is produced, performed and programmed by the students and showcases the experimental and inquiring approach to the making of performance that the programme fosters. Expect work that challenges, interrogates and entertains in equal measures.

[CLICK HERE FOR MORE INFO](#)

# NEWS

## NEW ADELPHI THEATRE IS NOW A MEMBER OF VENUES NORTH!

Venues North is a network of venues from across the North of England who are committed to supporting artists to create new work. The aim is to work together as venues to support new and emerging artists from the North to get their work more widely seen regionally, nationally and internationally. For more information click [here](#). For Venues North Routes In Guide, click [here](#).

## MEET OUR NEW INTERNS!



**GEORGIA LYNCH**  
Grad. (BA) Theatre & Performance  
NAT Intern



**NESSA SKEGGS**  
Grad. (BA) Media & Performance  
NAT Intern



**RACHEL ISBISTER**  
Grad. (BA) Theatre & Performance  
Directorate of PECW Intern



@NA\_THEATRE



/NEWADELPHITHEATRE



/NEWADELPHITHEATRE

**UNIVERSITY OF SALFORD**  
**UNIVERSITY ROAD**  
**SALFORD**  
**M5 4BR**